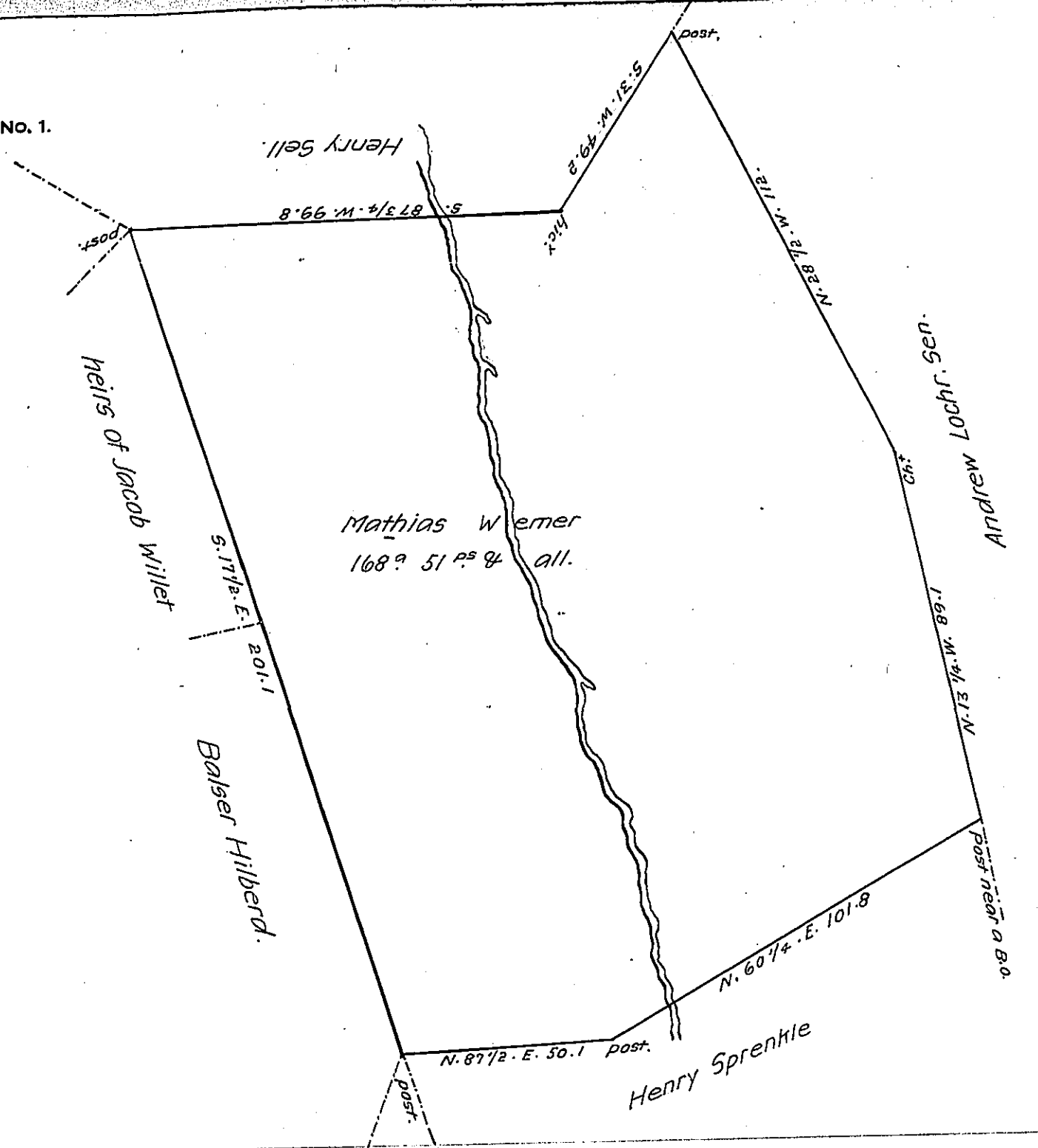


FORM NO. 1.



Situate in Germany Township Adams County, Surveyed March 15th 1808.

by warrant to Mathias Wemer for 100⁹. Dated October *29th 1765.

By Sam^l Sloan, D.S.

To Andrew Porter Esq.

Surveyor General.

* say 19th Oct: 1765.

IN TESTIMONY that the above is a copy of the original remaining on file in the Department of Internal Affairs of Pennsylvania, made conformably to an Act of Assembly approved the 16th day of February 1833, I have hereunto set my hand and caused the Seal of said Department to be affixed at Harrisburg, this sixteenth day of May 1907.

Henry Howe
Secretary of Internal Affairs.